

ATAC RESOURCES LTD RAU PROPERTY

2012 WEATHER DATA

An Onset Hobo weather station was installed and launched May 29, 2011 at the RAU Property airstrip. The weather station has operated continuously from May of 2011 to December of 2012.

The weather station is located at the approximate midpoint on the north side the airstrip (see site map). An approximate 50 meter by 50 meter area was cleared of fire killed trees and willow / buck brush with the station positioned in the northwest corner.

The station measures the following parameters with instruments mounted on a 3 meter mast:

1. Wind Speed
2. Wind Gusts
3. Wind Direction
4. Solar Radiation
5. Relative Humidity
6. Temperature
7. Rainfall Precipitation

Data recovery in 2012 for parameters solar radiation, wind speed, wind direction and wind gusts stopped September 11/12 due to moose damage.

Weather stations repairs were completed January 6, 2013.

All other parameters had a complete record recovered for the full year.

The weather data is listed as:

Wind Speed – Mean Daily

Wind Gusts – Maximum Daily

Wind Direction – Mean Daily

Solar Radiation – Mean daily

Relative Humidity – Daily Mean

Temperature – Maximum Daily

Mean Daily

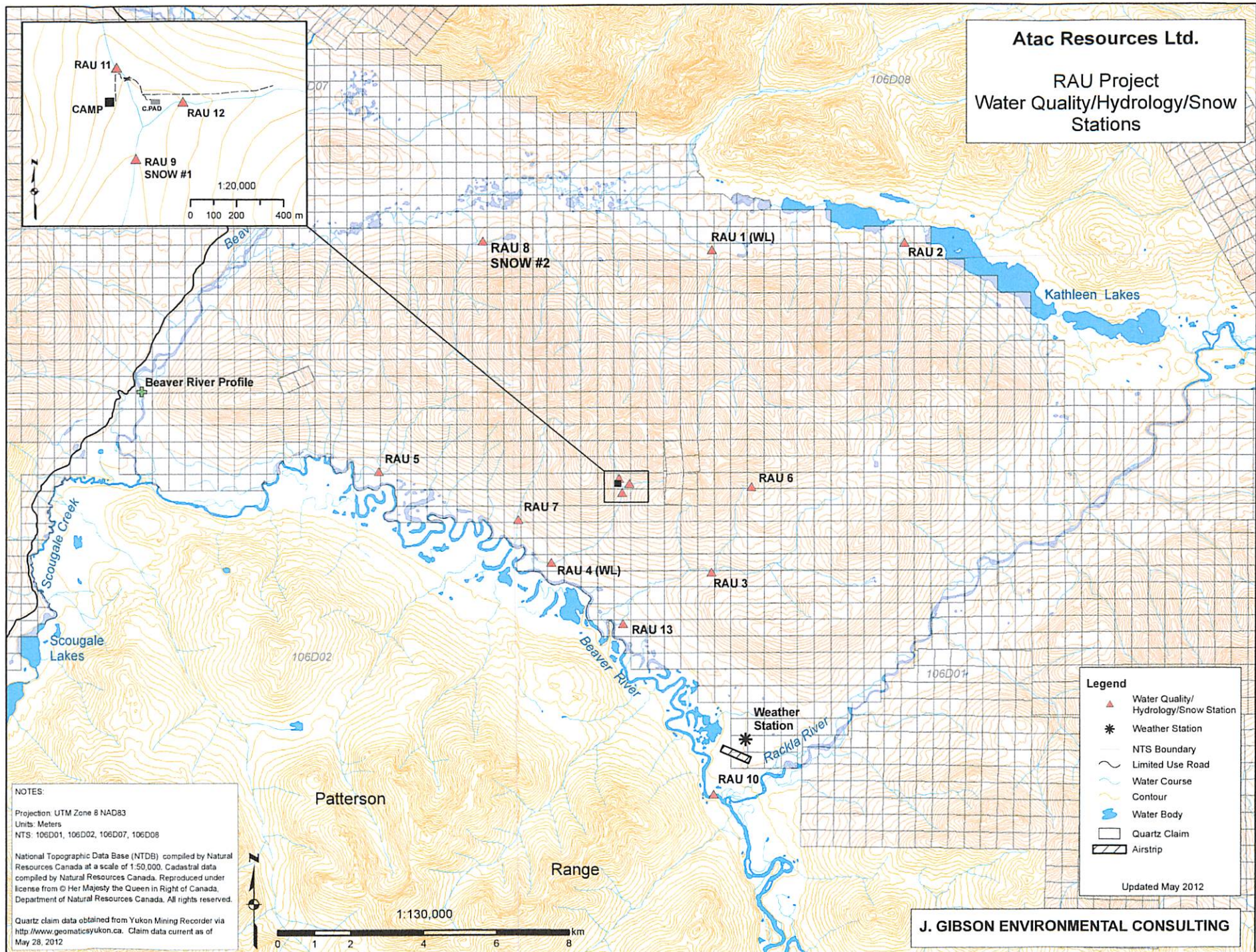
Minimum Daily

Rain Fall Precipitation – Daily Total

The data is on the attached disc.

Atac Resources Ltd.

RAU Project
Water Quality/Hydrology/Snow
Stations



Average Daily Wind Speed (metres/sec) Rau Airport 2012

Day	January	February	March	April	May	June	July	August	September	October	November	December
1	0.00	0.89	1.33	2.28	0.70	0.91	1.51	1.20	1.48			
2	0.37	1.97	1.65	1.93	1.94	1.07	1.24	1.54	0.28			
3	0.13	3.42	0.92	1.54	0.97	1.35	1.51	1.21	1.50			
4	0.57	1.30	1.66	0.86	1.13	1.12	1.61	1.19	0.73			
5	0.65	1.65	1.16	0.73	1.13	1.22	1.45	1.35	1.66			
6	1.47	0.53	0.83	0.50	2.22	0.99	1.07	1.03	1.36			
7	0.84	0.43	0.47	0.61	1.37	0.90	1.59	1.04	1.21			
8	0.80	0.69	0.99	2.09	1.24	1.27	0.99	0.90	0.57			
9	2.49	1.09	2.03	0.83	0.86	1.49	2.14	0.99	1.78			
10	1.91	1.50	1.84	1.00	1.18	1.08	1.27	1.31	1.18			
11	1.59	0.97	1.52	1.24	1.93	1.46	1.65	0.66	1.04			
12	0.51	1.30	1.63	1.28	2.31	1.32	1.47	0.72	0.54			
13	2.71	0.79	0.98	1.75	2.05	0.92	0.85	0.79				
14	0.85	1.40	1.10	2.04	1.35	1.15	0.74	0.52				
15	0.22	1.01	1.68	1.40	1.67	1.92	1.27	0.85				
16	0.14	0.73	1.63	1.17	1.91	1.36	1.30	1.06				
17	0.13	0.30	1.55	1.47	1.14	0.97	1.75	1.18				
18	0.21	0.24	1.20	1.24	1.07	1.06	1.20	0.62				
19	0.24	0.36	1.30	1.32	1.91	1.14	0.62	0.96				
20	0.32	1.26	2.51	1.02	1.37	0.98	1.23	0.82				
21	0.42	1.58	1.43	1.57	1.32	1.02	0.91	0.84				
22	1.98	0.83	1.10	0.90	1.61	1.31	0.79	0.74				
23	1.68	0.51	1.12	1.10	1.41	0.89	1.42	0.54				
24	1.93	0.35	0.49	1.20	1.44	1.66	1.21	0.51				
25	1.47	0.76	0.50	1.02	1.99	1.37	0.92	0.95				
26	0.71	1.25	1.24	1.38	1.33	1.09	0.75	0.98				
27	0.53	2.12	0.89	1.16	1.21	1.55	0.69	0.44				
28	0.39	3.55	1.65	1.27	1.17	0.94	1.07	0.00				
29	0.29	1.24	0.91	1.29	1.25	0.70	1.43	0.84				
30	0.30		1.72	0.79	1.29	1.43	1.34	1.25				
31	0.28		1.53		1.73		1.52	0.99				
Total	26.1	34.0	40.6	38.0	45.2	35.7	38.5	28.0	13.3	0.0	0.0	0.0
Mean	0.8	1.2	1.3	1.3	1.5	1.2	1.2	0.9	1.1			
Max	2.7	3.6	2.5	2.3	2.3	1.9	2.1	1.5	1.8	0.0	0.0	0.0
Min	0.0	0.2	0.5	0.5	0.7	0.7	0.6	0.0	0.3	0.0	0.0	0.0

Maximum Daily Wind Gust (metres/sec) Rau Airport 2012

Day	January	February	March	April	May	June	July	August	September	October	November	December
1	0.37	7.79	4.27	8.16	3.9	5.94	7.24	7.42	9.09			
2	6.68	10.2	5.94	7.05	8.35	9.09	7.05	5.01	3.53			
3	2.04	18.18	3.15	4.82	6.86	7.42	7.05	6.49	6.68			
4	4.64	7.24	7.05	3.71	5.94	6.31	7.98	6.31	4.27			
5	5.01	6.49	7.42	5.2	6.12	6.86	7.79	8.35	10.76			
6	5.38	3.34	5.01	2.97	10.2	5.57	5.75	5.2	7.98			
7	3.9	2.41	2.6	3.15	7.24	6.49	10.76	6.31	6.49			
8	3.71	3.71	7.61	7.05	5.38	6.68	5.94	4.82	4.64			
9	9.65	5.01	8.53	4.45	5.75	9.09	8.53	5.38	6.68			
10	6.12	6.12	6.12	5.57	6.86	8.16	8.16	5.94	5.57			
11	5.94	5.38	5.75	5.57	9.65	6.31	6.86	3.53	6.12			
12	2.97	5.94	7.98	5.57	9.09	6.49	6.31	5.94	4.45			
13	9.09	4.64	5.75	6.86	8.16	8.16	3.71	5.01				
14	4.82	5.57	5.38	8.53	6.68	5.75	5.75	5.2				
15	1.67	3.34	5.57	5.94	10.02	8.35	6.68	6.49				
16	1.67	3.53	5.75	3.71	8.35	7.24	7.61	11.69				
17	1.11	2.04	5.2	5.2	5.38	9.09	7.24	5.57				
18	1.3	1.67	4.82	4.64	5.38	8.35	5.94	3.71				
19	1.86	2.04	5.38	7.61	8.35	6.86	3.53	5.01				
20	2.23	5.2	9.46	6.12	6.12	7.05	9.83	5.94				
21	2.97	5.57	5.75	5.75	5.01	7.42	5.01	6.31				
22	8.72	2.97	5.2	5.94	6.86	8.91	5.57	9.09				
23	5.75	4.45	5.57	6.49	6.31	6.12	7.05	4.82				
24	6.12	2.04	2.78	8.16	8.91	7.61	7.98	6.12				
25	5.94	6.49	2.04	6.68	7.24	7.05	5.75	4.64				
26	3.15	4.45	5.01	6.12	6.68	10.02	5.01	5.94				
27	3.34	5.57	4.64	5.57	6.31	7.42	4.82	2.6				
28	1.86	11.13	5.94	5.57	7.61	4.64	6.68	0				
29	2.04	5.94	4.27	6.31	6.12	5.57	6.68	5.38				
30	1.48		6.31	4.64	7.24	7.05	6.86	6.49				
31	1.48		5.75		9.09		7.05	5.57				
Total	123.0	158.5	172.0	173.1	221.2	217.1	208.2	176.3	76.3	0.0	0.0	0.0
Mean	4.0	5.5	5.5	5.8	7.1	7.2	6.7	5.7	6.4			
Max	9.7	18.2	9.5	8.5	10.2	10.0	10.8	11.7	10.8	0.0	0.0	0.0
Min	0.4	1.7	2.0	3.0	3.9	4.6	3.5	0.0	3.5	0.0	0.0	0.0

Average Daily Wind Direction Rau Airport 2012
Degrees °

Day	January	February	March	April	May	June	July	August	September	October	November	December
1	142	163	127	87	147	174	227	145	125			
2	208	144	105	102	172	131	147	166	215			
3	152	158	78	87	155	114	171	268	132			
4	142	155	76	164	180	142	201	213	154			
5	233	115	131	156	148	113	205	148	150			
6	125	114	175	160	119	173	151	153	215			
7	118	173	155	152	134	126	139	162	177			
8	118	143	155	193	131	146	171	188	144			
9	221	125	78	173	151	141	173	200	158			
10	121	169	71	127	160	117	143	165	102			
11	131	115	145	115	136	121	235	171	113			
12	168	173	120	135	122	173	135	161	135			
13	69	151	152	111	179	168	142	153				
14	98	154	153	139	146	118	218	135				
15	122	135	120	151	242	187	173	202				
16	163	155	126	146	166	142	199	193				
17	149	136	126	139	154	181	203	167				
18	156	181	112	146	136	184	221	153				
19	193	221	86	113	159	182	196	165				
20	151	137	75	145	134	190	161	141				
21	225	92	129	127	125	131	147	130				
22	77	105	106	141	100	152	166	137				
23	77	166	147	120	117	158	180	148				
24	71	209	154	129	175	169	217	170				
25	94	111	140	144	177	158	170	222				
26	115	122	134	111	118	183	151	180				
27	105	107	144	97	123	166	167	190				
28	183	65	115	160	144	195	160	319				
29	200	134	141	135	132	171	180	184				
30	207		86	157	134	184	157	158				
31	232		84		156		147	163				
Mean	147	142	121	135	147	156	176	176	152			
Max	233	221	175	193	242	195	235	319	215	0	0	0
Min	69	65	71	87	100	113	135	130	102	0	0	0

Mean Daily Solar Radition (W/m2) Rau Airport 2012

Day	January	February	March	April	May	June	July	August	September	October	November	December
1	1.1	5.5	47.1	128.1	113.4	197.3	238.2	260.5	137.2			
2	1.4	15.7	57.2	164.1	188.2	228.2	213.3	76.8	67.2			
3	10.2	7.3	50.2	169.7	195.2	224.6	260.0	103.1	163.1			
4	1.8	23.6	78.2	159.3	178.2	258.0	266.4	235.2	73.9			
5	1.4	26.0	76.0	162.4	248.8	207.2	262.7	202.5	110.7			
6	1.6	30.6	51.5	133.6	207.0	128.5	317.6	203.1	149.9			
7	1.3	26.3	74.5	176.2	188.9	256.3	237.7	118.5	104.4			
8	1.6	19.4	60.1	189.2	124.4	181.8	275.2	127.4	89.2			
9	4.9	32.3	59.8	197.4	230.4	245.0	295.9	174.5	26.0			
10	2.2	31.9	77.2	198.8	199.8	96.4	52.4	241.2	66.3			
11	2.6	28.0	68.5	201.0	152.4	291.1	174.5	231.4	25.1			
12	3.4	16.2	88.4	203.3	214.8	156.7	185.5	140.9				
13	4.9	29.1	80.6	137.2	187.2	221.8	98.1	212.9				
14	5.4	13.0	102.5	123.4	178.0	198.2	209.0	195.3				
15	7.5	15.4	114.5	204.5	166.8	278.9	149.7	179.0				
16	8.7	11.9	88.8	220.7	201.3	219.5	170.8	232.4				
17	4.4	29.4	74.8	184.0	199.5	215.7	195.9	133.1				
18	9.1	12.4	116.5	222.0	251.7	294.6	214.4	110.7				
19	7.1	12.4	82.8	223.4	287.2	278.2	113.7	116.8				
20	10.6	28.3	128.9	194.1	235.9	237.3	145.0	203.3				
21	8.8	33.7	133.3	163.4	195.8	321.4	223.9	185.9				
22	7.9	53.9	137.6	204.4	293.1	248.5	219.2	202.1				
23	8.1	62.5	124.6	216.7	297.3	285.3	155.4	90.7				
24	7.3	60.0	102.5	185.2	283.6	258.4	179.8	91.7				
25	6.5	66.8	96.6	171.4	205.3	269.5	211.4	90.7				
26	6.0	23.3	124.0	243.8	152.9	170.9	274.7	174.3				
27	4.8	36.0	152.2	111.5	161.3	135.5	297.9	52.2				
28	5.1	52.5	151.8	248.7	212.5	209.7	200.2	85.4				
29	26.4	61.3	142.1	142.5	175.1	99.9	244.5	203.3				
30	4.4		116.4	159.5	188.2	96.9	248.8	188.4				
31	6.4		163.5		230.8		247.8	156.3				
Total	183.0	864.8	3022.6	5439.7	6344.9	6511.1	6579.8	5019.5	1013.1	0.0	0.0	0.0
Mean	5.9	29.8	97.5	181.3	204.7	217.0	212.3	161.9	92.1			
Max	26.4	66.8	163.5	248.7	297.3	321.4	317.6	260.5	163.1	0.0	0.0	0.0
Min	1.1	5.5	47.1	111.5	113.4	96.4	52.4	52.2	25.1	0.0	0.0	0.0

Daily Mean RH (%) Rau Airport 2012

Day	January	February	March	April	May	June	July	August	September	October	November	December
1	86.1	90.1	79.1	70.6	82.9	50.0	75.6	61.8	72.0	89.5	82.4	71.4
2	91.4	80.8	81.1	60.0	73.8	49.7	81.9	71.2	89.2	90.4	85.0	70.2
3	84.3	73.2	80.7	59.1	83.3	60.7	63.4	76.1	75.4	85.2	83.9	79.5
4	86.0	69.3	75.5	61.8	72.4	66.0	74.2	65.8	81.9	78.0	84.6	81.4
5	88.6	86.0	72.0	67.8	77.7	52.0	71.6	70.7	77.8	74.1	79.1	80.5
6	88.4	84.0	75.2	64.6	64.6	57.9	56.1	72.5	70.6	84.3	78.4	80.9
7	93.2	83.8	77.3	62.4	83.4	60.8	59.0	64.1	78.3	83.7	77.8	76.2
8	96.7	85.0	75.1	58.1	88.2	47.1	62.5	86.6	82.9	96.3	82.1	81.6
9	84.1	87.1	80.8	67.3	78.9	55.4	56.9	76.8	89.7	70.9	82.7	84.7
10	81.1	71.6	77.9	61.4	61.3	69.6	84.4	59.2	86.6	66.9	86.2	88.0
11	88.7	73.1	72.8	52.5	48.3	50.4	73.5	62.1	79.4	75.9	88.1	84.0
12	93.1	85.2	67.4	54.1	51.0	76.4	75.6	76.7	81.6	74.6	81.1	86.7
13	81.0	93.9	69.9	65.9	56.4	79.8	72.8	67.3	79.8	83.5	77.8	87.1
14	78.6	90.4	75.9	65.8	53.7	58.0	73.6	63.7	74.9	89.3	77.5	87.7
15	73.3	91.4	68.5	57.0	64.3	65.1	74.3	63.4	86.7	92.6	83.4	87.2
16	72.0	93.8	67.4	56.5	44.6	70.0	83.9	58.9	70.5	97.2	79.0	83.6
17	72.9	90.7	70.6	56.1	51.6	79.9	63.2	62.2	61.5	90.7	81.9	81.9
18	74.2	88.5	63.0	56.1	48.9	64.2	65.1	87.4	79.9	92.5	78.2	77.7
19	75.2	91.6	75.3	54.5	45.1	56.3	71.5	84.9	74.8	83.7	78.9	72.8
20	74.0	82.1	63.5	59.4	50.2	60.6	79.2	71.5	69.9	75.1	82.0	74.5
21	77.8	89.5	55.1	75.4	46.5	52.7	76.3	76.3	78.9	80.4	82.4	72.8
22	77.5	82.3	54.2	70.1	35.4	52.9	68.6	70.9	68.2	81.1	82.4	77.6
23	77.5	84.5	63.5	66.9	39.9	57.1	74.3	80.4	49.7	83.5	83.1	82.0
24	79.3	85.6	75.3	67.5	39.8	46.7	76.6	79.4	73.8	81.9	80.4	82.9
25	78.5	81.9	80.4	76.4	54.4	45.0	70.1	80.6	78.8	82.1	77.1	79.5
26	79.0	85.4	79.2	59.5	57.7	66.8	66.5	75.3	78.3	80.9	75.6	75.9
27	78.6	89.3	70.3	76.5	82.2	74.8	57.2	92.0	72.9	82.3	75.9	77.1
28	79.2	73.6	63.7	58.9	62.5	58.1	64.7	77.6	71.0	83.5	72.6	86.7
29	81.6	72.5	63.3	67.7	65.9	79.9	70.3	65.5	82.1	84.5	73.1	89.5
30	81.6		63.2	72.7	60.8	92.7	63.0	66.6	85.7	87.0	75.6	93.3
31	87.5		67.1		46.6		59.6	71.5		88.4		96.0
Total	2540.7	2436.0	2204.2	1902.5	1872.3	1856.7	2165.7	2238.9	2302.5	2590.2	2408.4	2531.1
Mean	82.0	84.0	71.1	63.4	60.4	61.9	69.9	72.2	76.7	83.6	80.3	81.6
Max	96.7	93.9	81.1	76.5	88.2	92.7	84.4	92.0	89.7	97.2	88.1	96.0
Min	72.0	69.3	54.2	52.5	35.4	45.0	56.1	58.9	49.7	66.9	72.6	70.2

Daily Max Air Temperature (Degrees Celsius)Rau Airport 2012

Day	January	February	March	April	May	June	July	August	September	October	November	December
1	-11.9	-4.8	-13.5	-5.9	8.2	17.5	18.7	21.7	18.4	7.4	-12.0	-38.7
2	-4.9	2.4	-9.4	-1.2	7.2	19.9	15.7	15.8	10.7	1.8	-9.4	-41.0
3	-21.7	4.1	-13.2	-0.8	5.9	20.9	18.3	14.6	16.3	5.5	-9.4	-26.3
4	-15.5	0.2	-10.1	4.3	8.8	21.9	16.7	18.8	15.0	5.1	-9.1	-24.1
5	-10.8	-10.7	-16.6	4.8	8.1	22.1	19.7	18.9	16.2	10.3	-11.0	-23.6
6	-15.2	-16.5	-16.1	6.4	9.2	17.2	24.0	19.4	15.6	8.4	-11.7	-22.2
7	-6.3	-14.9	-10.1	12.1	9.0	26.9	24.8	20.4	10.0	9.2	-14.5	-22.0
8	-2.6	-6.1	-8.7	8.6	7.2	25.0	20.5	20.0	10.0	3.9	-19.1	-23.7
9	-1.5	-5.4	-9.5	5.9	6.7	25.1	20.8	20.9	6.9	2.6	-17.9	-19.1
10	-20.1	1.6	-13.1	10.0	10.0	18.0	14.1	20.1	2.8	-0.8	-15.1	-16.2
11	-10.8	-3.1	-12.6	8.9	12.0	19.7	16.5	21.5	5.2	-3.1	-12.0	-16.5
12	-9.8	-1.5	-15.2	11.8	13.9	13.3	19.6	19.1	9.1	-3.3	-21.8	-15.7
13	-11.8	-3.0	-17.0	4.0	9.5	15.1	15.9	21.2	10.4	-5.1	-26.1	-14.2
14	-22.3	-6.7	-7.3	5.2	9.5	17.1	22.3	23.8	11.4	-0.2	-23.8	-15.1
15	-39.0	-5.0	-3.4	8.4	10.2	16.8	22.3	24.6	12.6	1.7	-19.7	-14.4
16	-41.7	-3.6	-13.7	11.9	10.9	15.3	18.2	25.3	14.4	0.5	-27.1	-21.5
17	-39.1	-10.7	-12.2	11.5	9.2	17.2	20.2	20.2	16.0	1.6	-22.8	-24.4
18	-38.7	-12.8	-0.7	13.3	13.4	22.1	19.3	15.7	9.8	-4.3	-25.8	-28.7
19	-34.3	-7.3	-7.0	12.1	14.5	24.0	17.1	17.4	14.4	-2.7	-25.2	-37.5
20	-38.4	-5.8	-15.2	13.3	14.3	24.4	21.4	22.1	20.2	-3.5	-22.3	-33.2
21	-20.5	-5.6	-13.5	9.6	15.4	27.8	24.2	21.3	20.2	-6.5	-19.7	-38.7
22	-19.5	-12.8	-7.0	11.4	19.7	27.6	25.9	22.3	20.7	-9.1	-21.0	-28.9
23	-27.0	-10.4	-5.9	12.0	21.5	29.5	23.4	17.7	19.4	-11.7	-23.0	-24.6
24	-27.5	-10.3	-3.6	8.6	23.2	28.4	19.9	19.4	11.9	-8.5	-25.8	-21.5
25	-28.2	-14.9	-3.2	10.4	17.4	26.8	21.9	15.3	11.8	-11.4	-30.1	-26.9
26	-28.3	-15.6	-2.9	10.3	18.2	23.4	25.4	17.5	10.4	-14.1	-31.6	-32.4
27	-31.2	-8.4	3.3	5.5	14.3	19.2	29.0	10.7	10.9	-13.0	-31.7	-25.4
28	-29.1	-16.2	5.9	10.7	18.3	19.7	26.7	9.9	8.3	-12.9	-36.1	-17.7
29	-28.1	-19.4	9.9	8.3	15.9	15.5	24.4	15.2	7.4	-15.2	-34.6	-12.6
30	-23.5		4.3	10.1	17.7	13.8	24.4	19.2	6.5	-12.4	-31.3	-5.3
31	-16.2		5.1		16.3		20.8	18.9		-9.3		-3.1
Mean	-21.8	-7.7	-7.5	8.0	12.8	21.0	21.1	19.0	12.4	-2.9	-21.4	-23.1
Max	-1.5	4.1	9.9	13.3	23.2	29.5	29.0	25.3	20.7	10.3	-9.1	-3.1
Min	-41.7	-19.4	-17.0	-5.9	5.9	13.3	14.1	9.9	2.8	-15.2	-36.1	-41.0

Daily Mean Air Temperature (Degrees Celsius) Rau Airport 2012

Day	January	February	March	April	May	June	July	August	September	October	November	December
1	-24.6	-13.7	-21.0	-9.2	3.6	10.3	12.0	12.8	8.6	-1.2	-16.4	-43.7
2	-10.6	-2.0	-14.7	-9.6	3.4	12.0	10.0	12.6	8.3	-5.7	-19.9	-45.3
3	-29.6	0.7	-16.9	-11.1	1.6	13.5	12.2	11.5	8.1	-4.5	-10.8	-30.4
4	-19.6	-6.1	-16.3	-9.6	2.7	12.9	10.8	10.8	9.3	-1.3	-11.2	-28.3
5	-14.7	-18.6	-24.8	-6.7	3.6	15.4	13.4	10.5	9.3	3.8	-12.1	-26.5
6	-20.3	-23.4	-22.9	-3.9	3.5	14.2	16.2	11.6	8.3	4.1	-13.2	-24.4
7	-10.5	-22.0	-24.5	-1.4	4.0	17.7	15.3	16.3	3.7	2.2	-22.7	-26.2
8	-5.3	-13.8	-20.9	1.0	2.4	19.4	13.9	14.4	5.4	1.0	-24.6	-25.2
9	-16.4	-13.6	-13.7	-2.6	1.7	17.2	14.7	14.2	1.9	-1.2	-18.9	-21.8
10	-29.9	-3.4	-18.7	-2.4	4.2	14.3	9.3	14.7	0.0	-8.3	-17.1	-17.7
11	-17.1	-6.9	-20.7	-0.4	6.3	12.6	8.9	12.3	0.8	-12.4	-18.3	-25.7
12	-13.4	-5.8	-21.3	1.3	7.8	10.1	10.0	10.1	1.6	-10.0	-30.9	-20.5
13	-18.5	-9.4	-24.2	-0.9	5.5	8.3	12.0	13.6	2.4	-9.7	-34.6	-20.8
14	-31.1	-11.0	-15.6	1.0	5.0	11.1	14.6	11.5	1.3	-3.8	-34.0	-19.1
15	-44.6	-8.6	-12.9	2.5	5.6	11.1	14.1	13.3	3.4	-0.3	-22.7	-19.0
16	-45.1	-7.3	-20.9	1.7	6.5	9.8	12.9	14.9	8.3	-1.2	-32.8	-22.7
17	-42.9	-16.9	-19.3	3.8	3.6	11.0	14.7	12.5	9.1	-3.1	-27.8	-27.3
18	-41.2	-20.0	-11.3	4.9	4.9	13.4	13.2	8.7	-0.5	-9.3	-31.2	-35.0
19	-39.4	-10.5	-13.3	5.1	7.0	14.8	12.4	9.7	3.8	-9.4	-31.3	-42.0
20	-41.9	-9.2	-19.5	4.2	7.5	14.9	13.3	11.0	9.6	-13.3	-24.9	-38.7
21	-35.8	-9.7	-22.4	4.1	9.1	17.5	13.4	13.3	9.2	-19.0	-26.4	-41.3
22	-22.7	-18.1	-19.3	3.4	13.0	17.3	18.3	11.7	10.5	-21.0	-28.1	-33.7
23	-27.7	-20.0	-18.6	2.3	12.8	17.9	16.2	10.2	12.1	-20.3	-25.6	-27.0
24	-28.4	-17.3	-15.9	2.2	14.1	20.4	14.4	13.7	6.6	-18.0	-29.7	-26.8
25	-29.9	-24.7	-11.8	3.2	11.7	19.1	14.7	11.4	3.8	-21.9	-35.6	-32.2
26	-30.1	-20.2	-12.6	3.9	11.5	15.7	15.4	8.5	5.6	-23.9	-36.6	-36.9
27	-34.1	-12.6	-9.8	0.4	9.9	12.7	18.0	8.8	4.8	-20.3	-37.1	-34.6
28	-32.5	-21.7	-5.4	2.3	11.4	14.9	17.0	8.1	4.3	-19.8	-41.8	-20.4
29	-30.8	-25.6	-2.7	2.8	9.1	12.8	16.7	7.6	2.8	-20.5	-40.4	-16.2
30	-30.0		-2.7	4.8	10.3	9.8	15.8	9.1	1.3	-17.1	-37.2	-10.3
31	-19.3		-5.0		10.6		15.5	7.6		-12.3		-6.8
Mean	-27.0	-13.5	-16.1	-0.1	6.9	14.1	13.9	11.5	5.5	-9.6	-26.5	-27.3
Max	-5.3	0.7	-2.7	5.1	14.1	20.4	18.3	16.3	12.1	4.1	-10.8	-6.8
Min	-45.1	-25.6	-24.8	-11.1	1.6	8.3	8.9	7.6	-0.5	-23.9	-41.8	-45.3

Daily Min Air Temperature (Degrees Celsius) Rau Airport 2012

Day	January	February	March	April	May	June	July	August	September	October	November	December
1	-34.6	-19.9	-26.1	-12.7	0.3	1.3	4.2	0.0	-1.6	-7.5	-27.0	-46.4
2	-20.4	-4.4	-20.6	-15.4	-1.5	0.2	3.7	10.0	2.8	-14.1	-28.3	-47.0
3	-32.5	-3.2	-23.0	-18.8	-2.2	5.4	6.0	8.2	-0.2	-12.9	-12.5	-43.3
4	-28.6	-19.3	-21.7	-21.6	-3.7	1.1	2.8	-0.1	6.4	-10.4	-12.4	-34.0
5	-21.1	-23.6	-32.5	-18.7	-0.5	5.9	8.3	0.9	2.4	-3.5	-13.4	-31.6
6	-23.9	-28.7	-29.1	-14.8	-2.7	8.8	5.2	0.5	0.8	0.7	-14.4	-27.3
7	-14.5	-26.4	-32.4	-13.1	1.3	7.7	4.2	12.9	-3.2	-2.8	-34.0	-28.8
8	-7.1	-21.6	-31.3	-8.8	-1.2	12.8	4.2	9.8	2.7	-2.9	-34.8	-27.1
9	-32.9	-17.5	-17.9	-13.7	-2.3	8.8	8.9	4.7	-1.7	-9.6	-20.4	-26.8
10	-38.7	-14.8	-21.9	-14.1	-1.9	7.1	5.6	7.6	-1.8	-15.0	-20.1	-19.6
11	-23.9	-12.6	-25.4	-11.4	-0.2	0.2	3.4	1.5	-3.5	-20.0	-27.8	-32.1
12	-16.1	-13.6	-26.5	-7.7	2.7	4.9	0.7	-0.4	-1.8	-16.9	-37.6	-30.8
13	-23.1	-15.5	-31.9	-7.7	1.1	0.3	6.0	5.0	-4.8	-18.2	-39.8	-28.6
14	-41.2	-15.2	-22.9	-3.6	-0.6	4.9	8.4	-2.7	-10.7	-7.2	-40.1	-24.5
15	-48.1	-10.3	-21.2	-4.5	0.9	4.4	7.0	0.4	-3.6	-1.9	-27.8	-22.4
16	-48.1	-13.5	-25.8	-7.6	0.3	1.0	7.4	3.1	2.8	-3.2	-36.7	-24.4
17	-47.0	-23.6	-24.4	-1.1	-5.0	7.5	9.3	3.4	-5.3	-15.2	-34.9	-30.7
18	-44.2	-28.1	-19.2	-1.9	-5.2	1.5	5.4	1.9	-10.8	-15.1	-38.9	-42.9
19	-43.9	-13.4	-17.9	-1.5	-2.0	2.6	6.1	1.6	-5.6	-17.3	-39.4	-43.6
20	-44.1	-11.6	-24.7	-3.0	-2.8	5.6	6.4	-1.4	-0.6	-21.6	-30.1	-41.6
21	-45.3	-16.5	-30.4	0.2	-1.8	3.8	1.6	7.7	-0.1	-26.8	-33.8	-43.3
22	-27.2	-26.0	-28.0	-2.5	4.5	4.8	6.5	0.9	-2.0	-28.0	-32.0	-41.0
23	-28.6	-28.0	-30.1	-6.5	-0.6	4.4	8.0	0.8	2.6	-28.1	-29.1	-31.3
24	-29.4	-23.7	-25.2	-5.9	4.2	8.8	7.6	9.9	-0.5	-23.8	-35.8	-30.8
25	-33.1	-33.6	-20.0	-0.8	6.0	9.8	6.4	5.1	-4.9	-27.6	-39.7	-35.9
26	-33.9	-26.1	-20.9	-2.2	1.8	10.5	2.9	-1.8	2.1	-30.5	-41.0	-38.3
27	-39.5	-16.3	-20.7	-3.7	6.6	6.9	3.6	6.6	-1.5	-27.4	-41.4	-38.4
28	-36.6	-27.6	-17.5	-6.5	3.6	8.8	6.3	5.6	0.8	-27.0	-43.8	-25.4
29	-36.1	-30.2	-13.4	-4.4	-0.1	9.5	6.4	-2.1	-2.8	-30.0	-43.6	-20.1
30	-38.2		-7.8	0.9	1.4	7.0	4.7	0.6	-3.7	-23.5	-41.2	-14.8
31	-24.1		-12.2		2.3		6.1	-3.1		-17.0		-16.7
Mean	-32.4	-19.5	-23.3	-7.8	0.1	5.5	5.6	3.1	-1.6	-16.3	-31.7	-31.9
Max	-7.1	-3.2	-7.8	0.9	6.6	12.8	9.3	12.9	6.4	0.7	-12.4	-14.8
Min	-48.1	-33.6	-32.5	-21.6	-5.2	0.2	0.7	-3.1	-10.8	-30.5	-43.8	-47.0

Rainfall Daily Total (mm) Rau Airport 2012

Day	January	February	March	April	May	June	July	August	September	October	November	December
1	0	0	0	0	5.6	0	6.8	0	0	0	0	0
2	0	0	0	0	2.4	0	12.6	1.4	2.2	0	0	0
3	0	9.6	0	0	0	0	0	1.2	0	0	0	0
4	0	0	0	0	2	2	0.2	0	0.8	0	0	0
5	0	0	0	0	1.4	0	0	2.2	10.8	0	0	0
6	0	0	0	0	0.2	0	0	0	0.2	0	0	0
7	0	0	0	0	2.4	0	0.6	0	0	0	0	0
8	0	0	0	0	1.6	0	0.2	3	0.4	0	0	0
9	0	0	0	0	4.4	0	0	2	4.4	2.6	0	0
10	0	0.6	0	0	0	0.2	14.6	0	1.6	0	0	0
11	0	0	0	0	0	0	3.6	0	0.6	0	0	0
12	0	0	0	0	0	2.4	0	0	15.2	0	0	0
13	0	0	0	0	0	2.2	0	0.2	0	0	0	0
14	0	0	0	0	0	0	0	0	0	0	0	0
15	0	0	0	0	0.2	2.4	2.2	0	0	3	0	0
16	0	0	0	0	0	0.4	4	0	0	0.2	0	0
17	0	0	0	0	0	7.8	0	0	1	0.2	0	0
18	0	0	1	0	0	4.2	0.8	4.2	0	0	0	0
19	0	0	0	0	0	0	0	0.2	0	0	0	0
20	0	0	0	0	0	0	1.4	0	0	0	0	0
21	0	0	0	1.4	0	0	0.2	2.4	0	0	0.2	0
22	0	0	0.2	0	0	0	0	0	0	0	0	0
23	0	0	0	0	0	1.4	0	0	0	0	0	0
24	0	0	0	0.2	0	0	1.6	0.4	0	0	0	0
25	0	0	0.2	0	0	0	0	1.6	0	0	0	0
26	0	0	0	0	0	1.8	0	0	0	0	0	0
27	0	0	0.2	0	8.8	0	0	7.2	0	0	0	0
28	0	0	0	0	0	0	0	3.4	0	0	0	0
29	0	0	0	0	0	5.2	0	0	0	0	0	0
30	0		0	0.4	0	4.4	0	0	0	0	0	0
31	0		0		0		0	0		0		0
Total	0.0	10.2	1.6	2.0	29.0	34.4	48.8	29.4	37.2	6.0	0.2	0.0
Mean	0.0	0.4	0.1	0.1	0.9	1.1	1.6	0.9	1.2	0.2	0.0	0.0
Max	0.0	9.6	1.0	1.4	8.8	7.8	14.6	7.2	15.2	3.0	0.2	0.0
Min	0.0	0.0	0.0	0.0	0.0	0.0	0.0	0.0	0.0	0.0	0.0	0.0